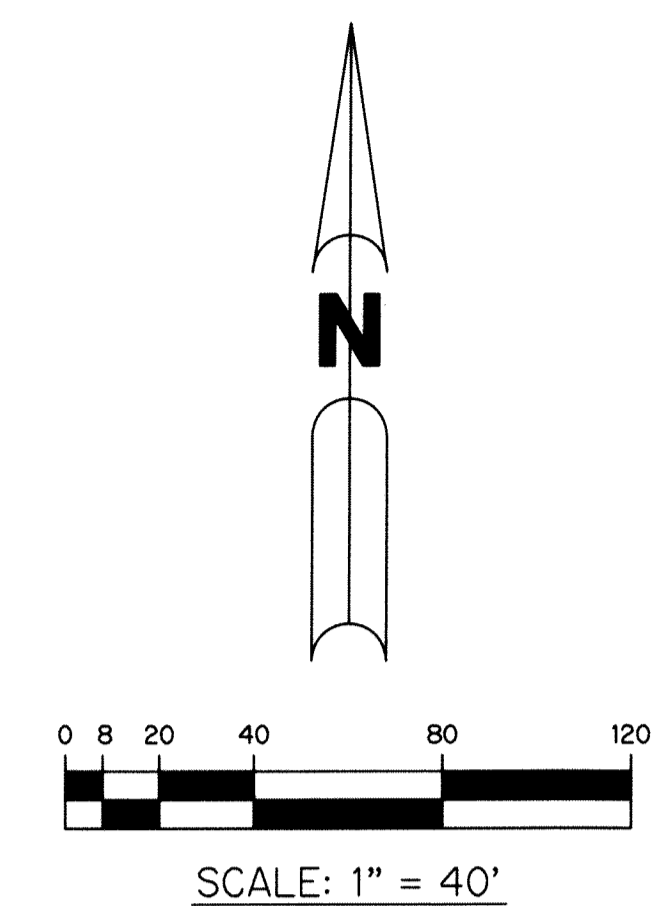


# MONTICELLO AGR - PUD PLAT SIX

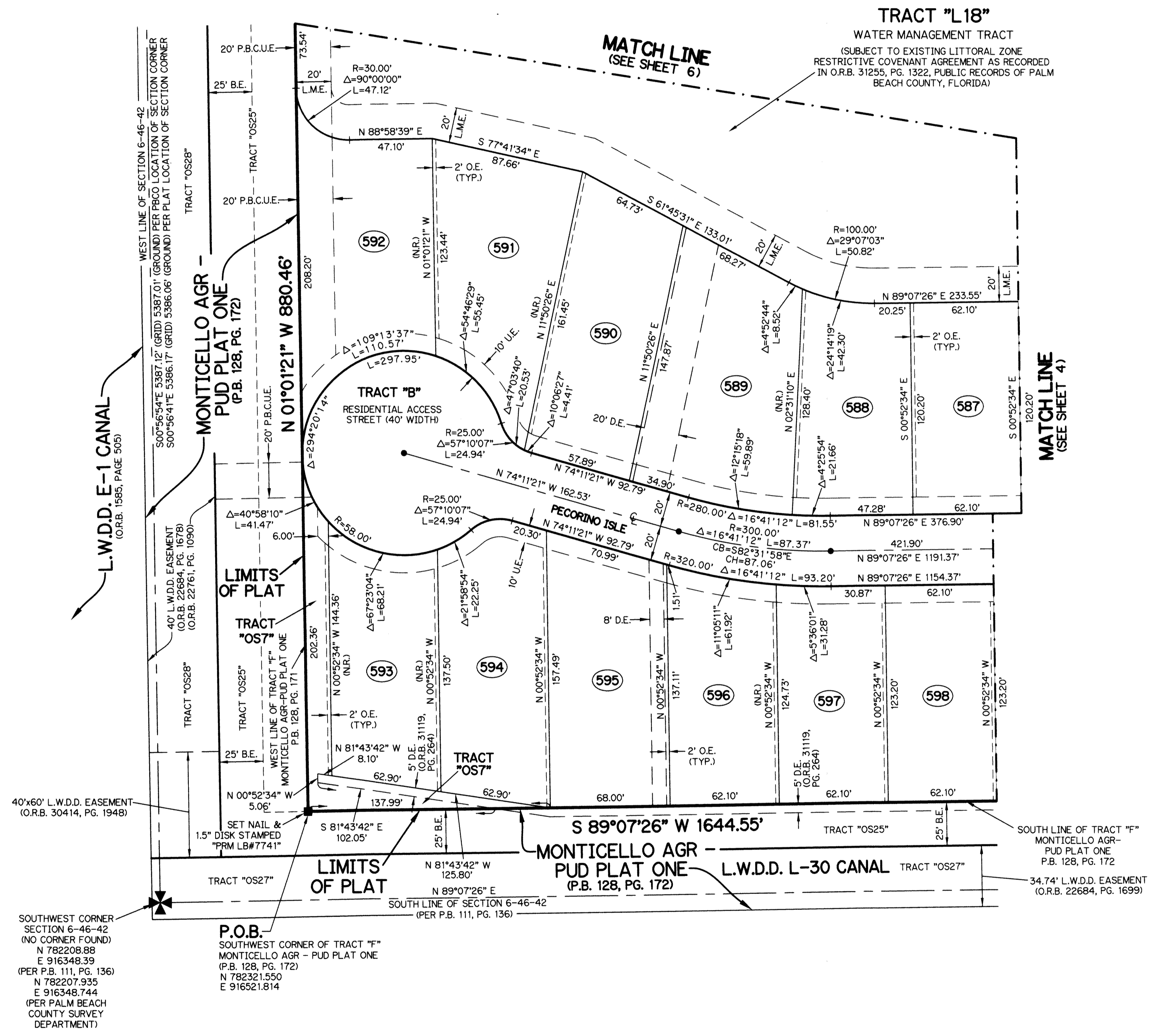
BEING A REPLAT OF A PORTION OF TRACT F, MONTICELLO AGR - PUD PLAT ONE, AS RECORDED IN PLAT BOOK 128, PAGES 172 THROUGH 194, PUBLIC RECORDS, PALM BEACH COUNTY, FLORIDA, LYING IN SECTION 6, TOWNSHIP 46 SOUTH, RANGE 42 EAST, PALM BEACH COUNTY, FLORIDA

SHEET 5 OF 7

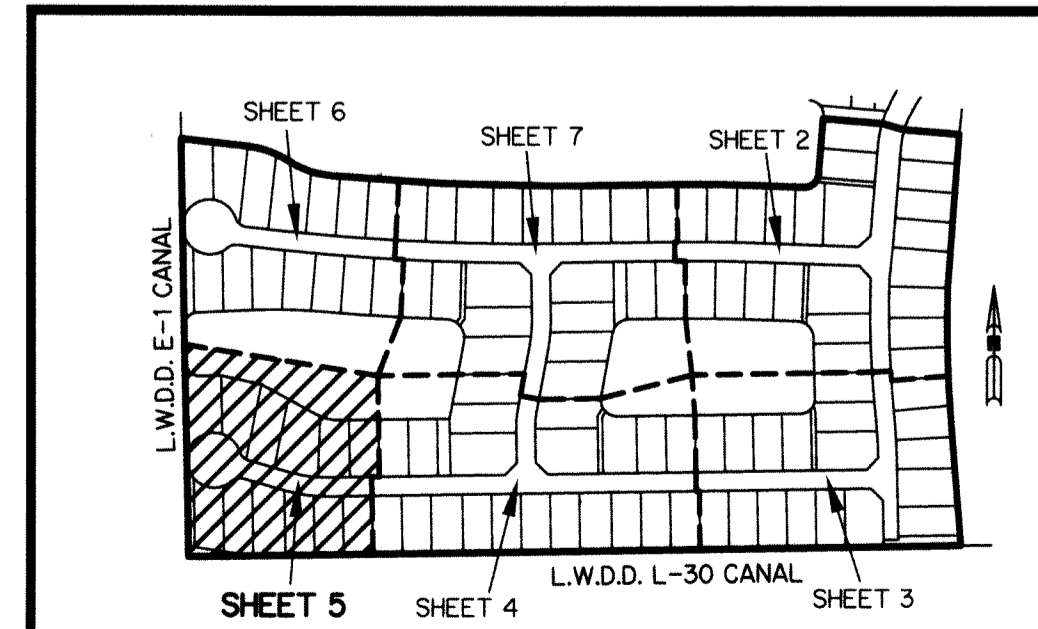
75



- LEGEND:**
- - SET PERMANENT REFERENCE MONUMENT  
4"x4" CONCRETE MONUMENT WITH  
1.5" DISK STAMPED L.B. #7741 (UNLESS OTHERWISE NOTED)
  - - FOUND PERMANENT REFERENCE MONUMENT  
4"x4" CONCRETE MONUMENT WITH  
1.5" DISK STAMPED L.B. #7741
  - - SET PERMANENT CONTROL POINT  
NAIL WITH 1.25" DISK STAMPED L.B. #7741
  - - FOUND PERMANENT CONTROL POINT  
NAIL WITH 1.25" DISK STAMPED L.B. #7741
  - AGR - AGRICULTURAL
  - Δ - DELTA ANGLE
  - B.E. - BUFFER EASEMENT
  - BLK - BLOCK
  - CB - CHORD BEARING
  - CH - CHORD DISTANCE
  - CL - CENTERLINE
  - D.B. - DEED BOOK
  - D.E. - PRIVATE DRAINAGE EASEMENT
  - F.P.L. - FLORIDA POWER & LIGHT
  - L - ARC LENGTH
  - L.A.E. - LIMITED ACCESS EASEMENT
  - LB - LICENSED BUSINESS
  - L.M.A.E. - LAKE MAINTENANCE ACCESS EASEMENT
  - L.M.E. - LAKE MAINTENANCE EASEMENT
  - L.W.D.D. - LAKE WORTH DRAINAGE DISTRICT
  - NR - NOT RADIAL
  - N.R.T.R. - NOT RADIAL TO REAR LINE
  - N.T.S. - NOT TO SCALE
  - O.R.B. - OFFICIAL RECORD BOOK
  - O.E. - MAINTENANCE & ROOF OVERHANG EASEMENT
  - P.B.C.O. - PALM BEACH COUNTY
  - P.B.C.U.E. - PALM BEACH COUNTY UTILITY EASEMENT
  - P.B. - PLAT BOOK
  - P.C. - POINT OF CURVATURE
  - P.C.P. - PERMANENT CONTROL POINT
  - P.D.E. - PUBLIC DRAINAGE EASEMENT
  - PG. - PAGE
  - PGS. - PAGES
  - P.O.B. - POINT OF BEGINNING
  - P.O.C. - POINT OF COMMENCEMENT
  - P.O.I. - POINT OF INTERSECTION
  - P.R.C. - POINT OF REVERSE CURVATURE
  - P.S.M. - PROFESSIONAL SURVEYOR AND MAPPER
  - P.T. - POINT OF TANGENCY
  - PUD - PLANNED UNIT DEVELOPMENT
  - R - RADIUS
  - RAD - RADIAL
  - R/W - RIGHT-OF-WAY
  - R.D. & D. - ROAD, DYKE AND DITCH RESERVATION
  - S.T. - SURVEY TIE
  - TYP. - TYPICAL
  - U.E. - UTILITY EASEMENT
  - N=790000.00 - STATE PLANE COORDINATE VALUE
  - E=930000.00



THIS INSTRUMENT WAS PREPARED BY  
 PERRY C. WHITE, P.S.M. 4213, STATE OF FLORIDA  
 SAND & HILLS SURVEYING, INC.  
 8461 LAKE WORTH ROAD, SUITE 410  
 LAKE WORTH, FLORIDA 33467  
 LB-7741



**KEY MAP**  
N.T.S.